



ALTIC

Advanced Language, Translation, and Interpretation Courses



The National Foreign Language Center at the University of Maryland (NFLC-UMD) is pleased to offer the following courses through the Office of the Director of National Intelligence (ODNI)-funded ALTIC program.



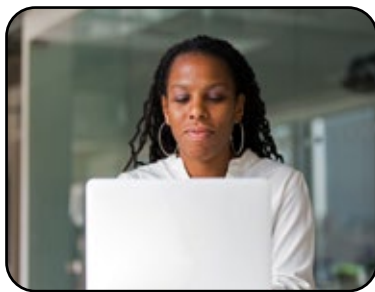
NFLC



ADVANCED LANGUAGE COURSES

Advanced language courses offered through the 2025 ALTIC program are designed for government professionals with ILR Level 2+ proficiency in Chinese, Persian, or Russian who want to advance their skills.

The NFLC-UMD collaborates closely with government stakeholders to offer courses centered on current, relevant, and authentic materials, which are presented in carefully sequenced thematic units that integrate culture, area studies, mission-related language, and advanced grammar. ALTIC language courses follow the **NFLC-UMD's research-based language learning principles** and leverage its experience as a U.S. Department of Education-funded Language Resource Center, Defense Language and National Security Education Office (DLNSEO)-funded Language Training Center, and former STARTALK administrator.



The NFLC-UMD's learner-centered classroom approach is designed to engage participants. Instructors are committed to providing additional support tools and enrichment activities as needed to **ensure that all participants succeed**. Instructors and participants communicate in the target language throughout the program, supported by structured, performance-based activities and assessments. Progress is tracked through weekly reports sent to participants and supervisors so that all stakeholders can work together.

APPLICANT CRITERIA FOR ADVANCED LANGUAGE PROGRAMS

The ALTIC program is rigorous and requires participants to actively engage in all course activities and complete additional daily homework. ALTIC Chinese, Persian, and Russian courses are designed for students with Interagency Language Roundtable (ILR) L2+ proficiency **in at least one modality** (reading, listening, and/or speaking) as demonstrated on the Defense Language Proficiency Test (DLPT), Oral Proficiency Interview (OPI), or other standardized language proficiency tests taken within the last 12 months. Ideally, participants should engage with the target language regularly in professional settings. Supervisors must approve participation and ensure that applicants can commit full-time to the program. Classes are capped at 10 students each.

6-WEEK INTENSIVE LANGUAGE COURSES

(MAY 1, 2025–JUNE 13, 2025)

ALTIC 6-week language courses are available in Chinese, Persian, and Russian and are offered at the NFLC-UMD's campus-adjacent offices located at 5600 Rivertech Court, Suite K, in Riverdale, Maryland. This intensive training program is a full-time commitment for the duration of the course. Students can expect to engage with instructors and fellow participants for 8 hours each day, followed by 1 hour of daily independent study. All students are expected to maintain daily attendance and fully participate in all required activities. Please note that one day each week will be designated as a synchronous online class that will be conducted via Zoom. Class will not be held on Friday, May 23 or Monday, May 26 (Memorial Day).



All training materials are provided free of charge; however, this program does NOT cover any travel or lodging expenses of the student. Free parking is available for the 6-week program.

These courses will convey 15 Continuing Education Units (CEUs) to be awarded by the University of Maryland's Office of Extended Studies.

Sample Schedule

Time	Activity	Notes
8:30-11:30	Morning Lesson	Instructor Led
11:30-12:30	Lunch Break	Conversation Practice
12:30-3:30	Afternoon Lesson	Instructor Led
3:30-4:30	Tutoring	Instructor Led
1 hour	Homework	Independent Study

SUMMER RESIDENTIAL IMMERSION PROGRAM

(JULY 13, 2025–AUGUST 2, 2025)

ALTIC summer residential courses are available in Chinese and Persian and take place on the University of Maryland campus. Participants reside in air-conditioned, single occupancy rooms that are clustered in suites, and they enjoy meals together in campus dining halls. Students will sign a pledge agreeing to communicate only in the target language for the duration of the program and can expect to engage with instructors and fellow participants for up to 12 hours each day with 1 hour of daily independent study. All students are expected to maintain daily attendance and fully participate in all required activities. On weekends, students engage in field trips and special events designed to deepen their understanding of the culture and history of the target language region.



All training materials, lodging, and meals are provided free of charge; however, this program does NOT cover any travel or parking expenses of the student.

Sample Residential Weekday Schedule

Time	Activity	Notes
8:30–11:30	Morning Lesson	Instructor Led
11:30–12:30	Lunch Break	Conversation Practice
12:30–3:30	Afternoon Lesson	Instructor Led
3:30–5:00	Break	Free Time/Optional Tutoring
5:00–6:00	Dinner	Conversation Practice
6:00–8:30	Evening Lesson	Instructor Led
1 hour	Homework	Independent Study



NFLC

5600 Rivertech Court, Suite K • Riverdale, MD 20737
📞 nflc.umd.edu ✉ nflc-training@umd.edu 📞 301.405.9828
